



## WE'RE THE CALM BEFORE – AND AFTER – THE STORM

*It's unpredictable. It's inconvenient.  
And yes, it can show up at your doorstep  
unannounced . . .*

*. . . The Weather.*

That's why we've designed your windows with two very important things in mind: accenting your home and protecting it from harsh weather conditions.

At International Window, we can't predict the weather. But we can predict where it will stay - outside your home. We've spent over four decades perfecting our line of aluminum, vinyl and wood windows. In fact, as one of the early pioneers of aluminum windows, we're pleased to offer you one of the largest selections of aluminum windows available on the market today.



Over the past 40 years, other window companies have come and gone. Sure, there are still a few good ones, but at International Window, *we've weathered the storm* . . . and there's just no substitute for experience.

## *F*EATURES

- **A**t International Window, quality is our trademark. That's why we leave nothing to chance. We use premium quality aluminum extrusions in all of our windows and patio doors, offered in mill finish, clear or bronze anodized and white or bronze paint. Then each product undergoes rigorous testing to ensure its adaptability to changing climatic conditions. By using state-of-the-art technology, we are able to consistently manufacture top quality windows and doors.
- **A** lot of companies talk about customer service. At International Window, we embrace it – by treating each customer with respect and dignity. That means keeping our promises, standing behind our products, shipping on time and listening to what our customers have to say. Our dedicated sales staff is available to service your needs. Frankly, we value you as a customer. We appreciate your business. We'll do what it takes to make you happy. It's that simple.

# TABLE OF CONTENTS

## RESIDENTIAL WINDOW SERIES

W  
I  
N  
D  
O  
W  
S

### **SERIES 6200**

Single Hung Window	Page 2
Full, Half, Quarter Circle Window	
Picture & Acrylic Block Window	
Horizontal Sliding Window	Page 3
Casement & Awning Window	
Bay & Bow Window	

### **SERIES 1400**

Horizontal Sliding Window	Page 4
Single Hung Window	
Picture Window	
Full, Half, Quarter Circle Window	

### **SERIES 1360**

Garden Window	Page 5
---------------	--------

### **SERIES 2000**

Horizontal Sliding Window	Page 8
Single Hung Window	

## RESIDENTIAL DOOR SERIES

W  
I  
N  
D  
O  
W  
S

### **SERIES 950/951**

Patio Door

### **SERIES 550/551**

Economy Patio Door	Page 6
--------------------	--------

## COMMERCIAL WINDOW & DOOR SERIES

W  
I  
N  
D  
O  
W  
S

### **SERIES 6200**

Horizontal Sliding Window	Page 11
Single Hung Window	

### **SERIES 7500**

Commercial Door

## TECHNICAL INFORMATION

W  
I  
N  
D  
O  
W  
S

Grid Options	Page 12
Window Frame Profiles	

Window/Door Performance Matrix	Page 13
Glass Performance	

Window Configurations	Page 14-16
Door Configurations	Page 17

D  
O  
O  
R  
S

# SERIES 6200

**QUALITY OR PRICE.** People think it's a compromise. You know, one or the other. Well, at International Window, we don't believe you should have to sacrifice anything. So, we designed the 6200 Imperial Series - a competitively priced aluminum window that literally redefines quality. We've engineered the 6200 Series to reflect a product that is secure, strong and remarkably durable. The Series is available in single hung, horizontal slide, casement, bay, bow and picture window configurations. Our standard dual glazed configuration gives you additional thermal protection, while reducing unwanted outdoor noise.

## SINGLE HUNG



*THE SINGLE HUNG WINDOW* is the premier product in the Imperial Series. This window features a fixed panel and a lower sash panel that gently glides to a ventilating position. The sash panel tilts inward, making exterior and screen access a breeze. For your convenience, the design incorporates a simple-to-use latch and lock mechanism.

*Shown with optional marginal v-groove glass*

**ALSO AVAILABLE IN THE 6200 SERIES:**



FULL, HALF, QUARTER CIRCLE PICTURE



PICTURE & ACRYLIC BLOCK

## FEATURES

### SINGLE HUNG CORNER SECTION



- 2 5/8" Frame Depth
- Tilt-in Sashes
- Offered in Single or 3/4" Dual Glazing
- Clean and Even Sight Lines
- Sloped Sill with Weepholes

### Additional Features

- Spring Loaded Balance
- Built-in Security Night Lock

## SECURITY



DESIGNER SERIES  
RECESSED LATCH & LOCK

# SERIES 6200 HORIZONTAL SLIDING

# WINDOWS

## FEATURES

### HORIZONTAL SLIDING CORNER SECTION



- 25/8" Frame Depth
- Offered in Single or 3/4" Dual Glazing
- Clean and Even Sight Lines

### Additional Features

- Anti-Lift Sash Blocks
- Smooth Delrin® Rollers (pictured below)



*Shown with optional grid pattern*

*THE HORIZONTAL SLIDING WINDOW* has been a longtime staple of contractors and builders. This window accents virtually every room in the house. The Delrin® tandem rollers ensure smooth operation. Our safety features include a simplified latch and lock system and a secondary NightLock, which enables the window to remain in a locked position while providing 2" of ventilation.



## SECURITY



### NIGHT LOCK

## ALSO AVAILABLE IN THE 6200 SERIES:



CASEMENT & AWNING



BAY



BOW

# SERIES 1400 HORIZONTAL SLIDING



*\* 1400 Series Available only in South Gate, CA Location*

When strict budgeting is a priority, the *1400 WINDOW SERIES* is a good, reliable window that blends quality with simplicity. The series is available in the single-glazed configuration only. Choose from horizontal slide, single hung, picture and specialty window frames.



*ALSO AVAILABLE IN THE 1400 SERIES:*



SINGLE HUNG



PICTURE



FULL, HALF, QUARTER  
CIRCLE PICTURE

## FEATURES

### HORIZONTAL SLIDING CORNER SECTION



- 1 3/4" Frame Depth
- Offered in Single Glaze
- Clean and Even Sight Lines
- Notched Corners for Strength

#### Additional Features

- Anti-Lift Sash Blocks
- Automatic Latch Lock
- Smooth Nylon Rollers  
(pictured below)



# SERIES 1360 GARDEN WINDOW

## FEATURES

### ADJUSTABLE SHELF



- Welded Steel Rod for Strength
- Painted in Matching Colors
- Grated Shelf for Air Circulation
- Adjustable Height

### SIDE VENTS



- Vertical Opening Vents
- Locks for Security
- Allows the Maximum Cross Ventilation

If you're a gardening enthusiast, we think you'll agree - the *1360 GARDEN SERIES WINDOW* provides your plants with the best of both worlds - controlled exposure to sunlight



and fresh air as well as protection from harsh external elements. Ideal for the kitchen, our garden window gives understated charm and warmth to the home. This window allows plants and herbs to flourish by permitting a limited amount of sunlight to enter the solar chamber. Tinted glass top panel prevents plants from wilting and two side vents facilitate cross ventilation.

Nominal Size Width x Height	DIMENSIONS	
	New Construction with Sub-Frame	Replacement & New Construction (NO Sub-Frame)
	Rough Opening	Rough Opening
3-0 x 3-0	38 <sup>1</sup> / <sub>2</sub> x 40	35 <sup>1</sup> / <sub>4</sub> x 36 <sup>1</sup> / <sub>2</sub>
3-0 x 3-6	38 <sup>1</sup> / <sub>2</sub> x 46	35 <sup>1</sup> / <sub>4</sub> x 42 <sup>1</sup> / <sub>2</sub>
3-0 x 4-0	38 <sup>1</sup> / <sub>2</sub> x 52	35 <sup>1</sup> / <sub>4</sub> x 48 <sup>1</sup> / <sub>2</sub>
3-0 x 5-0	38 <sup>1</sup> / <sub>2</sub> x 64	35 <sup>1</sup> / <sub>2</sub> x 60 <sup>1</sup> / <sub>2</sub>
4-0 x 3-0	50 <sup>1</sup> / <sub>2</sub> x 40	47 <sup>1</sup> / <sub>4</sub> x 36 <sup>1</sup> / <sub>2</sub>
4-0 x 3-6	50 <sup>1</sup> / <sub>2</sub> x 46	47 <sup>1</sup> / <sub>4</sub> x 42 <sup>1</sup> / <sub>2</sub>
4-0 x 4-0	50 <sup>1</sup> / <sub>2</sub> x 52	47 <sup>1</sup> / <sub>4</sub> x 48 <sup>1</sup> / <sub>2</sub>
4-0 x 5-0	50 <sup>1</sup> / <sub>2</sub> x 64	47 <sup>1</sup> / <sub>4</sub> x 60 <sup>1</sup> / <sub>2</sub>
5-0 x 3-0	62 <sup>1</sup> / <sub>2</sub> x 40	59 <sup>1</sup> / <sub>4</sub> x 36 <sup>1</sup> / <sub>2</sub>
5-0 x 3-6	62 <sup>1</sup> / <sub>2</sub> x 46	59 <sup>1</sup> / <sub>4</sub> x 42 <sup>1</sup> / <sub>2</sub>
5-0 x 4-0	62 <sup>1</sup> / <sub>2</sub> x 52	59 <sup>1</sup> / <sub>4</sub> x 48 <sup>1</sup> / <sub>2</sub>
5-0 x 5-0	62 <sup>1</sup> / <sub>2</sub> x 64	59 <sup>1</sup> / <sub>4</sub> x 60 <sup>1</sup> / <sub>2</sub>
6-0 x 3-0	74 <sup>1</sup> / <sub>2</sub> x 40	71 <sup>1</sup> / <sub>4</sub> x 36 <sup>1</sup> / <sub>2</sub>
6-0 x 3-6	74 <sup>1</sup> / <sub>2</sub> x 46	71 <sup>1</sup> / <sub>4</sub> x 42 <sup>1</sup> / <sub>2</sub>
6-0 x 4-0	74 <sup>1</sup> / <sub>2</sub> x 52	71 <sup>1</sup> / <sub>4</sub> x 48 <sup>1</sup> / <sub>2</sub>

SOUTH GATE & PHOENIX ONLY

Nominal Size Width x Height	DIMENSIONS
	*Replacement & New Construction (NO Sub-Frame)
	Rough Opening
3-0 x 3-0	36 x 36
3-0 x 3-6	36 x 42
3-0 x 4-0	36 x 48
3-0 x 5-0	36 x 60
4-0 x 3-0	48 x 36
4-0 x 3-6	48 x 42
4-0 x 4-0	48 x 48
4-0 x 5-0	48 x 60
5-0 x 3-0	60 x 36
5-0 x 3-6	60 x 42
5-0 x 4-0	60 x 48
5-0 x 5-0	60 x 60
6-0 x 3-0	72 x 36
6-0 x 3-6	72 x 42
6-0 x 4-0	72 x 48

\* HAYWARD ONLY - DOES NOT OFFER SUBFRAME

# SERIES 950/951 PATIO DOORS



Choose between an outside (950) and an inside (951) sliding panel from International Window. This door combines a slim design with a heavy-duty aluminum extrusion, resulting in a strong, rigid patio door that meets minimum-security requirements. The 950/951 SERIES also features a NightLock, which enables the door to maintain a secure, locked position while allowing 2" of ventilation. Choose between single and dual glazed configurations as well as a variety of patterns. Available in nail-on frame and retrofit configurations.



**STANDARD HANDLE**

# SERIES 550/551 ECONOMY PATIO DOORS



The 550/551 SERIES is an affordable product for the budget-conscious. Slimmer in design, the Economy Patio Door meets minimum industry requirements and bypasses all the bells and whistles.



**STANDARD HANDLE**

	500 SERIES		900 SERIES	
	Outside Slide	Inside Slide	Outside Slide	Inside Slide
Single Glazed	500	501	925	926
Dual Glazed	550	551	950	951

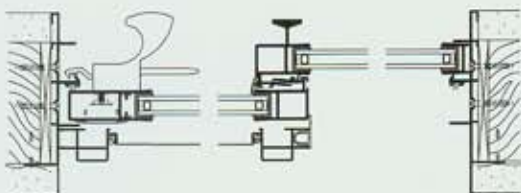
## ALSO AVAILABLE IN THE 900 SERIES PATIO DOORS

**SERIES 930 – SINGLE GLAZED**

**SERIES 970 – DUAL GLAZED**

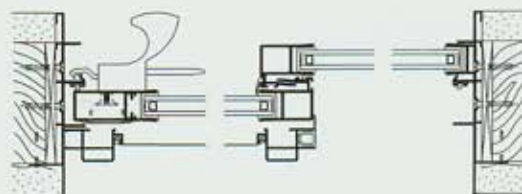
**A HIGH LOAD INTERLOCKER SPECIFICALLY DESIGNED FOR HIGH WINDLOAD AREA.**

HORIZONTAL SECTION - 970 SERIES



SHOWING 5 1/2" FRAME  
DUAL GLAZED

HORIZONTAL SECTION - 950 SERIES



SHOWING 5 1/2" FRAME  
DUAL GLAZED

# ALUMINUM

## SERIES 2000

### *Simple Beauty...*

*The smaller profiles of 2000 Series reflect the principle of simple beauty. The clean lines and larger glazing area do not distract your eyes from all the design details of your home, just enhance them. Still, we have taken away nothing when it comes to available options, with choice of colors, finishes and styles to fit anybody's budget or imagination.*

Series 2000 Windows  
are only available from:

#### International Window Corporation

5625 E. Firestone Blvd.  
South Gate, California 90280

Area Code 562-928-6411  
Toll Free: 1-800-477-3391 • 800-477-4032  
Fax: 562-928-3492

#### International Window- Northern California

30526 San Antonio Street  
Hayward, California 94544

Area Code 510-487-1122  
Order Desk 510-487-1234  
Fax: 510-471-9387



Just as other window series, Series 2000 windows come with IWC's Limited Lifetime Warranty, as long as you own your home. Please ask your sales representative for details.

# RESIDENTIAL 2000 WINDOWS SERIES

## When the Clouds Start Rolling In, We Give You More Than a Silver Lining.

AT INTERNATIONAL WINDOW, we've been making high quality, weather-resistant windows for over four decades. But we don't believe in resting on our laurels; we are continually developing innovative products to meet the needs of a changing marketplace.

**Aluminum versus Vinyl.** Each component has its advantages, but combine the two and you have the **Residential 2000 Series** – a superior window that is attractive, warm to the touch, durable and competitively priced.

Over the last 40 years, other window companies have come and gone. Sure, there are still a few good ones. But at International Window, we've weathered the storm . . . and there's just no substitute for experience.



### SINGLE HUNG WINDOW

- **Stucco return for a flush exterior finish.** The result – a more aesthetically pleasing window that accommodates stucco finishing.
- **Service Excellence.** On the job site, things don't always go as planned, so we've come to expect the unexpected. If windows must be changed or replaced, we're available to service your needs immediately.
- **State-of-the-art** calibrated sash balances ensure smooth operation and durability.
- **Protection** against forced entry.
- **Full-length pulls** make opening and closing a breeze.

*Shown with optional grid pattern*

## FEATURES

### HORIZONTAL SLIDING CORNER SECTION



1. 1/2" Insulated Glazing
2. Both a 1" and 1 3/8" Stucco Return Offered
3. Aluminum Window Frame
4. Full Welded Sash Frame
5. Desiccant "Intercept" Spacer
6. Aluminum Sash Stiffener
7. Aluminum Framed Fiber Mesh Screen

### Additional Features

- Aluminum Mullion
- .70 U-Factor Rating

## SECURITY



DIE CAST  
LATCH & LOCK

# WINDOW CONFIGURATIONS AVAILABLE

The Residential 2000 Window Series comes in a variety of configurations, with many of the same features as the Single Hung Window. From our Horizontal Slider to our Picture Windows, we'll help you give your clients that custom look they've been searching for.



SINGLE HUNG



HORIZONTAL SLIDING



PICTURE



FULL, HALF, QUARTER  
CIRCLE PICTURE

## GRID OPTIONS

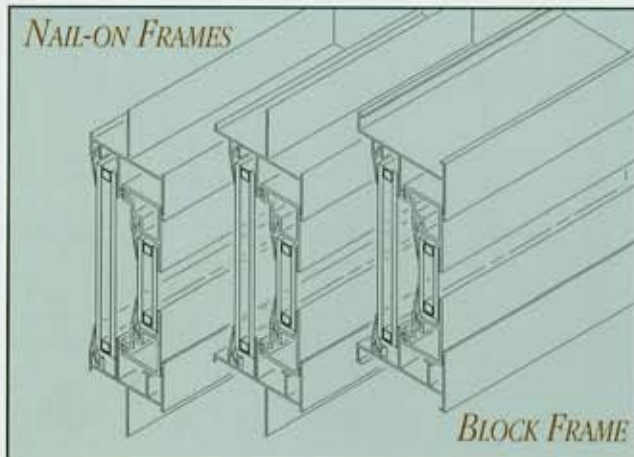


Flat Grid Design



Grid patterns are available for most window configurations. Grids provide a rich, colonial flavor for your home's decor. Patterns are constructed with a flat grid design. Custom grid patterns are available for creating a more eccentric look.

## WINDOW FRAME PROFILE



NAIL-ON FRAMES

BLOCK FRAME

The entire series incorporates both a 1" and \*1 3/8" stucco return. The result – a flush exterior finish for a more aesthetically pleasing window.

\* 1" available only in South Gate.

## WINDOW PERFORMANCE MATRIX

SERIES	DESCRIPTION	AAMA RATING (1 & 2)	STRUCTURALLY TESTED (MPH) (3)	FORCED ENTRY TESTED (4)	U-VALUE RANGE (5)	RESIDENTIAL 2000 PERFORMANCE
RESIDENTIAL 2000 WINDOWS	HORIZONTAL SLIDE	HS-R20 <sup>(1)</sup>	108	PASSED	.50 - .75	HORIZONTAL SLIDE SHGC RANGE (6) .67-.17 VLT RANGE (7) .13-.67
	SINGLE HUNG	SH-R20 <sup>(2)</sup>	108	PASSED	.50 - .75	SINGLE HUNG SHGC RANGE (6) .17-.67 VLT RANGE (7) .13-.67
	PICTURE WINDOW	F-R20 <sup>(1)</sup>	108	PASSED	.42 - .68	PICTURE WINDOW SHGC RANGE (6) .16-.71 VLT RANGE (7) .15-.73

1. Tested in accordance to AAMA/NWDA 101.AS.2-97 specification.

2. Tested in accordance to AAMA 101-93.

3. Static pressure and air velocity relationship expressed mathematically by the formula:  $P = .0025V^2$

4. Forced entry resistance tested in accordance to CAWM 301-90.

5. U-Value determined in accordance to NFRC 100.

6. Solar heat gain coefficient certified in accordance to NFRC-200.

7. Visible light transmission certified in accordance to NFRC-200.

For more information about our door products, please contact our customer service.

# RESIDENTIAL 2000 WINDOWS SERIES CONFIGURATIONS

NOMINAL DIMENSION			1-6	2-0	2-6	3-0	3-6	4-0	5-0	6-0	7-0	8-0	10-0
ROUGH OPENING			18	24	30	36	42	48	60	72	84	96	120
NFD			17 <sup>3</sup> / <sub>8</sub>	23 <sup>3</sup> / <sub>8</sub>	29 <sup>3</sup> / <sub>8</sub>	35 <sup>3</sup> / <sub>8</sub>	41 <sup>3</sup> / <sub>8</sub>	47 <sup>3</sup> / <sub>8</sub>	53 <sup>3</sup> / <sub>8</sub>	61 <sup>3</sup> / <sub>8</sub>	83 <sup>3</sup> / <sub>8</sub>	95 <sup>3</sup> / <sub>8</sub>	119 <sup>3</sup> / <sub>8</sub>
1-0	12	11 <sup>3</sup> / <sub>8</sub>											
1-6	18	17 <sup>3</sup> / <sub>8</sub>											
2-0	24	23 <sup>3</sup> / <sub>8</sub>											
2-6	30	29 <sup>3</sup> / <sub>8</sub>											
3-0	36	35 <sup>3</sup> / <sub>8</sub>											
3-6	42	41 <sup>3</sup> / <sub>8</sub>											
4-0	48	47 <sup>3</sup> / <sub>8</sub>											
4-6	54	53 <sup>3</sup> / <sub>8</sub>											
5-0	60	59 <sup>3</sup> / <sub>8</sub>											*
6-0	72	71 <sup>3</sup> / <sub>8</sub>											

STANDARD SIZES SHOWN. NON-STANDARD SIZES AVAILABLE UPON REQUEST

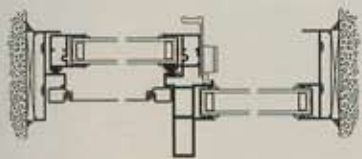
\* 10050 R-15

- SINGLE HUNG
- HORIZONTAL SLIDE
- FIXED
- FULL CIRCLE
- HALF CIRCLE
- QUARTER CIRCLE
- UBC EGRESS

# SERIES 6200 COMMERCIAL WINDOW

## COMMERCIAL WINDOW

Heavier Interlock and Mullion Grant the Commercial Rating for This Attractive Window Series.



6282 BLOCK FRAME SHOWN

## HORIZONTAL SLIDING



The 6200 COMMERCIAL WINDOW combines a residential look with commercial characteristics. The window exceeds the C30 rating and is an attractive alternative to the larger profile systems typically installed by glazing contractors.

ALSO AVAILABLE IN THE 6200 SERIES COMMERCIAL WINDOWS:

SINGLE HUNG



## COMMERCIAL DOOR CORNER SECTION



- Inside Slide
- Available in 1" Dual Glazing and Single Glazing
- Steel Tandem Roller Assembly
- 4 1/2" Block Frame Shown
- 5 1/2" Nail-On Frame Available

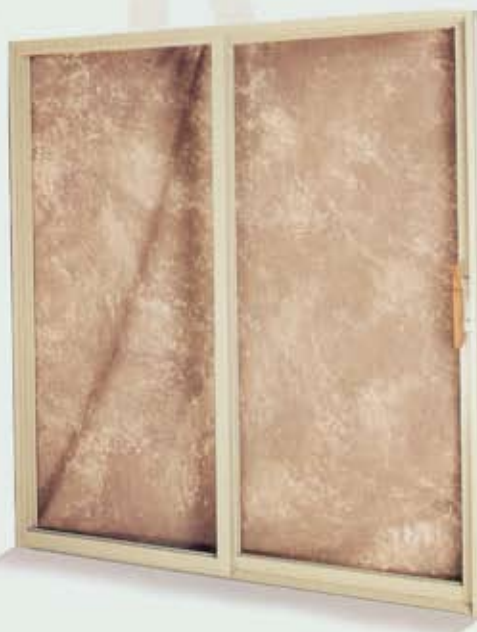
# SERIES 7500 COMMERCIAL DOORS

The 7500 SERIES COMMERCIAL DOOR embodies a streamlined, residential appearance, yet meets the standards of a commercial product. The 7500 Series



DOOR HANDLE

is a favorable alternative as we offer up to HC-40 ratings.



\* 7500 Series Available only in South Gate, CA Location

# GRID OPTIONS



*Flat Grid Design*



*Sculptured Grid Design*



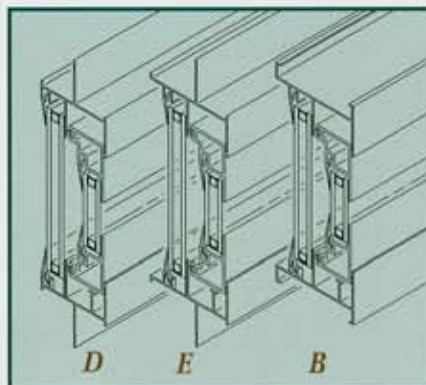
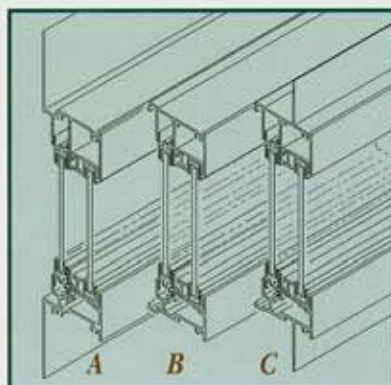
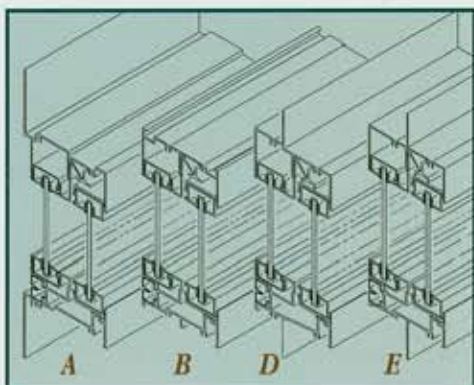
Grid designs are available for most window configurations, providing a rich colonial flavor for your home's decor. Grid patterns are available in sculptured grid and flat grid designs. Various grid configurations are available for creating custom and eccentric looks.

# FRAME PROFILES

*6200 Series Horizontal Sliders*

*1400 Series Horizontal Sliders*

*2000 Series Horizontal Sliders*



*A. FLUSH FIN B. BLOCK FRAME C. NAIL-ON FRAME D. \*1" NAIL-ON FRAME E. 1 3/8" NAIL-ON FRAME*

*\* AVAILABLE ONLY IN SOUTH GATE*

We offer several frame options that fit your individual needs. We recommend the flush fin frame when replacing existing windows. The block frame is appropriate for either replacement or new construction applications. The nail-on frame is typically used for new construction projects.

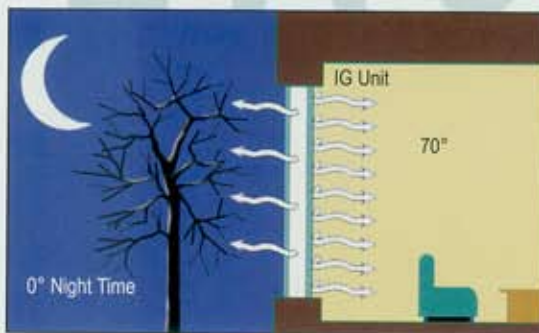
# WINDOWS & DOORS PERFORMANCE MATRIX

SERIES	DESCRIPTION	AAMA RATING (1 & 2)	STRUCTURALLY TESTED (MPH) (3)	FORCED ENTRY TESTED (4)	U-VALUE RANGE (5)	STC TESTED RANGE (6)
6200	HORIZONTAL SLIDE	R20-C40 <sup>(1)</sup>	108-153	PASSED	.49-1.25	29-44
	SINGLE HUNG	R20-C40 <sup>(1)</sup>	108-153	PASSED	.52-.74	30-33
	FIXED	R20-C40 <sup>(1)</sup>	108-153	PASSED	1.19	31
	CASEMENT & AWNING	R20 <sup>(1)</sup>	108	PASSED	.49-.69	N/A
	ACRYLIC BLOCK	R15 <sup>(2)</sup>	93	PASSED	.61	N/A
1400	HORIZONTAL SLIDE	R15 <sup>(2)</sup>	93	PASSED	1.22	N/A
	FIXED	R20 <sup>(1)</sup>	108	PASSED	1.19	N/A
1360	GARDEN WINDOW	R20 <sup>(1)</sup>	108	N/A	2.26	N/A
950/951	SLIDING DOOR	R15 <sup>(2)</sup>	93	PASSED	.50 - .84	27-36
7500	SLIDING DOOR	R20-C40 <sup>(1)</sup>	108-153	PASSED	.67-1.23	N/A

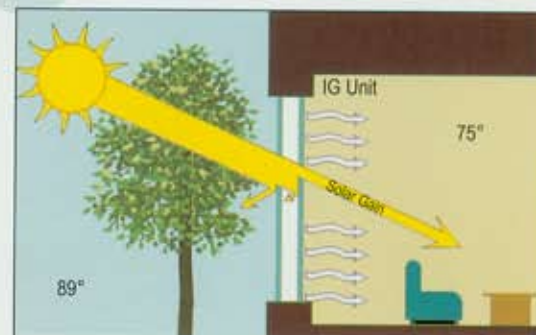
1. Tested in accordance to AAMA/NWDA 101/A.S.2-97 specification.
2. Tested in accordance to AAMA 101-93.
3. Static pressure and air velocity relationship expressed mathematically by the formula:  $P = .00256V^2$
4. Forced entry resistance tested in accordance to CAWM 301-90 for windows and CAWM 300-89 for doors.
5. U-Value determined in accordance to NFRC 100.
6. Sound transmission class determined using ASTM-413.

## GLASS PERFORMANCE

Winter Comfort



Summer Comfort



Yes...we protect your home from stormy weather. But there's more. Many of our aluminum window and door products also provide protection from harmful ultraviolet rays. While this certainly safeguards your home furnishings and window treatments, here's another benefit: low emmissivity (low-e, or the ability to block heat and ultraviolet rays) significantly reduces the ultraviolet light that enters your home. Ask about our low-e features and make a smart choice economically and ecologically.

# SERIES 6200

NOMINAL DIMENSION			1-6	2-0	2-6	3-0	3-6
ROUGH OPENING			18	24	30	36	42
NFD			17 <sup>3</sup> / <sub>8</sub>	23 <sup>3</sup> / <sub>8</sub>	29 <sup>3</sup> / <sub>8</sub>	35 <sup>3</sup> / <sub>8</sub>	41 <sup>3</sup> / <sub>8</sub>
1-0	12	11 <sup>3</sup> / <sub>8</sub>					
1-6	18	17 <sup>3</sup> / <sub>8</sub>					
2-0	24	23 <sup>3</sup> / <sub>8</sub>					
2-6	30	29 <sup>3</sup> / <sub>8</sub>					
3-0	36	35 <sup>3</sup> / <sub>8</sub>					
3-6	42	41 <sup>3</sup> / <sub>8</sub>					
4-0	48	47 <sup>3</sup> / <sub>8</sub>					
4-6	54	53 <sup>3</sup> / <sub>8</sub>					
5-0	60	59 <sup>3</sup> / <sub>8</sub>					
6-0	72	71 <sup>3</sup> / <sub>8</sub>					
7-0	84	83 <sup>3</sup> / <sub>8</sub>					
8-0	96	95 <sup>3</sup> / <sub>8</sub>					

## SERIES 6200 Acrylic Block

Available in Standard and Custom Sizes.		ROUGH OPENINGS	NET FRAME DIMENSION
Standard Size	Fixed	10 <sup>3</sup> / <sub>4</sub> " x 10 <sup>3</sup> / <sub>4</sub> " to 66 <sup>3</sup> / <sub>4</sub> " x 66 <sup>3</sup> / <sub>4</sub> "	(RO - <sup>3</sup> / <sub>4</sub> ") Width and Height
	Casement	21" x 21" to 29" x 53"	(RO - <sup>5</sup> / <sub>8</sub> ") Width and Height
	Awning	21" x 13" to 45" x 29"	(RO - <sup>5</sup> / <sub>8</sub> ") Width and Height

# WINDOWS

4-0	5-0	6-0	7-0	8-0	10-0
48	60	72	84	96	120
47 <sup>3</sup> / <sub>8</sub>	59 <sup>3</sup> / <sub>8</sub>	71 <sup>3</sup> / <sub>8</sub>	83 <sup>3</sup> / <sub>8</sub>	95 <sup>3</sup> / <sub>8</sub>	119 <sup>3</sup> / <sub>8</sub>

## SERIES 1400 - HORIZONTAL SLIDE / FIXED \*AVAILABLE ONLY IN SOUTH GATE, CALIFORNIA LOCATION.

NOMINAL DIMENSION	2-0		2-6		3-0		3-6		4-0		5-0		6-0		8-0		10-0			
	ROUGH OPENING		23 <sup>1</sup> / <sub>4</sub>		29 <sup>1</sup> / <sub>4</sub>		35 <sup>1</sup> / <sub>4</sub>		41 <sup>1</sup> / <sub>4</sub>		47 <sup>1</sup> / <sub>4</sub>		59 <sup>1</sup> / <sub>4</sub>		71 <sup>1</sup> / <sub>4</sub>		95 <sup>1</sup> / <sub>4</sub>		119 <sup>1</sup> / <sub>4</sub>	
	NFD		22 <sup>1</sup> / <sub>2</sub>		28 <sup>1</sup> / <sub>2</sub>		34 <sup>1</sup> / <sub>2</sub>		40 <sup>1</sup> / <sub>2</sub>		46 <sup>1</sup> / <sub>2</sub>		58 <sup>1</sup> / <sub>2</sub>		70 <sup>1</sup> / <sub>2</sub>		94 <sup>1</sup> / <sub>2</sub>		118 <sup>1</sup> / <sub>2</sub>	
1-0	12 <sup>1</sup> / <sub>2</sub>	11 <sup>0</sup> / <sub>16</sub>	□	◐	□	□	□	□	□	□	□	□	□	□	□	□	□	□	□	□
1-6	18 <sup>1</sup> / <sub>2</sub>	17 <sup>0</sup> / <sub>16</sub>	□	□	□	□	□	□	□	□	□	□	□	□	□	□	□	□	□	□
2-0	24 <sup>1</sup> / <sub>2</sub>	23 <sup>0</sup> / <sub>16</sub>	□	□	□	□	□	□	□	□	□	□	□	□	□	□	□	□	□	□
2-6	30 <sup>1</sup> / <sub>2</sub>	29 <sup>0</sup> / <sub>16</sub>	□	□	□	□	□	□	□	□	□	□	□	□	□	□	□	□	□	□
3-0	36 <sup>1</sup> / <sub>2</sub>	35 <sup>0</sup> / <sub>16</sub>	□	□	□	□	□	□	□	□	□	□	□	□	□	□	□	□	□	□
3-6	42 <sup>1</sup> / <sub>2</sub>	41 <sup>0</sup> / <sub>16</sub>	□	□	□	□	□	□	□	□	□	□	□	□	□	□	□	□	□	□
4-0	48 <sup>1</sup> / <sub>2</sub>	47 <sup>0</sup> / <sub>16</sub>	□	□	□	□	□	□	□	□	□	□	□	□	□	□	□	□	□	□
5-0	60 <sup>1</sup> / <sub>2</sub>	59 <sup>0</sup> / <sub>16</sub>	□	□	□	□	□	□	□	□	□	□	□	□	□	□	□	□	□	□
6-0	72 <sup>1</sup> / <sub>2</sub>	71 <sup>0</sup> / <sub>16</sub>	□	□	□	□	□	□	□	□	□	□	□	□	□	□	□	□	□	□

□ □ = HORIZONTAL SLIDE    □ = FIXED    ● = FULL CIRCLE    ◐ = HALF CIRCLE    ◑ = QUARTER CIRCLE    ◑ = UBC EGRESS  
 NET FRAME DIMENSIONS SHOWN ARE FOR NAIL-ON FRAMES ONLY. BLOCK NET FRAME DIMENSION: WIDTH = NOMINAL LESS 3/16" HEIGHT = NOMINAL LESS 1/8"  
 ● ◑ - Please use NFD of the width for the height also.    ◐ - NFD (height) = 1/2 of NFD (width)

## SERIES 1400 - SINGLE HUNG / FIXED \*AVAILABLE ONLY IN SOUTH GATE, CALIFORNIA LOCATION.

NOMINAL DIMENSION	1-6		2-0		2-6		3-0		3-6		4-0		5-0		6-0					
	ROUGH OPENING		18 <sup>1</sup> / <sub>8</sub>		24 <sup>1</sup> / <sub>8</sub>		30 <sup>1</sup> / <sub>8</sub>		36 <sup>1</sup> / <sub>8</sub>		42 <sup>1</sup> / <sub>8</sub>		48 <sup>1</sup> / <sub>8</sub>		60 <sup>1</sup> / <sub>8</sub>		72 <sup>1</sup> / <sub>8</sub>			
	NFD		17 <sup>1</sup> / <sub>8</sub>		23 <sup>1</sup> / <sub>8</sub>		29 <sup>1</sup> / <sub>8</sub>		35 <sup>1</sup> / <sub>8</sub>		41 <sup>1</sup> / <sub>8</sub>		47 <sup>1</sup> / <sub>8</sub>		59 <sup>1</sup> / <sub>8</sub>		71 <sup>1</sup> / <sub>8</sub>			
1-0	11 <sup>1</sup> / <sub>8</sub>	10 <sup>1</sup> / <sub>8</sub>			□	□			□	□			□	□						
1-6	17 <sup>1</sup> / <sub>8</sub>	16 <sup>1</sup> / <sub>8</sub>			□	□			□	□			□	□						□
2-0	23 <sup>1</sup> / <sub>8</sub>	22 <sup>1</sup> / <sub>8</sub>			□	□			□	□			□	□						□
2-6	29 <sup>1</sup> / <sub>8</sub>	28 <sup>1</sup> / <sub>8</sub>	◑	◑	□	□	◑	◑	□	□	◑	◑	□	□	◑	◑				□
3-0	35 <sup>1</sup> / <sub>8</sub>	35 <sup>1</sup> / <sub>8</sub>	◑	◑	□	□	◑	◑	□	□	◑	◑	□	□	◑	◑				□
3-6	41 <sup>1</sup> / <sub>8</sub>	40 <sup>1</sup> / <sub>8</sub>	◑	◑	□	□	◑	◑	□	□	◑	◑	□	□	◑	◑				□
4-0	47 <sup>1</sup> / <sub>8</sub>	46 <sup>1</sup> / <sub>8</sub>	◑	◑	□	□	◑	◑	□	□	◑	◑	□	□	◑	◑				□
4-6	53 <sup>1</sup> / <sub>8</sub>	52 <sup>1</sup> / <sub>8</sub>	◑	◑	□	□	◑	◑	□	□	◑	◑	□	□	◑	◑				□
5-0	59 <sup>1</sup> / <sub>8</sub>	58 <sup>1</sup> / <sub>8</sub>	◑	◑	□	□	◑	◑	□	□	◑	◑	□	□	◑	◑				□
6-0	71 <sup>1</sup> / <sub>8</sub>	70 <sup>1</sup> / <sub>8</sub>			□	□			□	□			□	□						□
7-0	83 <sup>1</sup> / <sub>8</sub>	82 <sup>1</sup> / <sub>8</sub>			□	□			□	□			□	□						□

◑ = SINGLE HUNG    ◑ = 1/2 VENT SINGLE HUNG    □ = FIXED    ◑ = UBC EGRESS  
 NET FRAME DIMENSIONS SHOWN ARE FOR NAIL-ON FRAMES ONLY. BLOCK NET FRAME DIMENSION: WIDTH = NOMINAL LESS 1/8" HEIGHT = NOMINAL LESS 3/8"

# STANDARD DOOR SIZES

SERIES	NOMINAL DIMENSION	X O		O X		O X O		X O O		O O X		O X X O		X O O X	
		5-0	6-0	8-0	10-0	7-6	9-0	12-0	15-0	10-0	12-0	16-0	20-0		
	NFD	4'-11 <sup>1</sup> / <sub>16</sub> "	5'-11 <sup>1</sup> / <sub>16</sub> "	7'-11 <sup>1</sup> / <sub>16</sub> "	9'-11 <sup>1</sup> / <sub>16</sub> "	7'-5 <sup>1</sup> / <sub>8</sub> "	8'-11 <sup>1</sup> / <sub>8</sub> "	11'-11 <sup>1</sup> / <sub>8</sub> "	14'-11 <sup>1</sup> / <sub>8</sub> "	9'-10 <sup>1</sup> / <sub>2</sub> "	11'-10 <sup>1</sup> / <sub>2</sub> "	15'-10 <sup>1</sup> / <sub>2</sub> "	19'-10 <sup>1</sup> / <sub>2</sub> "		
500	6-8	*	S/D	S/D	S/D	S	S/D	S/D	S/D	S	S/D	S/D	S/D	S	
900	6-8	*	S/D	S/D	S/D	S	S/D	S/D	S/D	S	S/D	S/D	S/D	S	
	8-0	*	S/D	S/D	S/D	S	S/D	S/D	S/D	S	S/D	S/D	S/D	S	

S/D = AVAILABLE IN SINGLE OR DUAL GLAZED

S = AVAILABLE IN SINGLE GLAZED ONLY

\* NFD HEIGHT

OUTSIDE SLIDE NOMINAL - 1/8"

INSIDE SLIDE NOMINAL + 1/4"

OUTSIDE SLIDE

ROUGH OPENING = NFD + 1/2"

INSIDE SLIDE

ROUGH OPENING = NFW + 1/2"

NFH + 7/8"

## SERIES 7500 DOORS \*AVAILABLE ONLY IN SOUTH GATE, CALIFORNIA LOCATION.

DOOR TYPE	ACTUAL DOOR SIZE *Width x Height			
	7501	7521	7901	7921
X O	6'-0" x 6'-8 <sup>1</sup> / <sub>8</sub> "	6'-0" x 6'-8 <sup>1</sup> / <sub>8</sub> "	6'-1/2" x 6'-8 <sup>1</sup> / <sub>8</sub> "	6'-1/2" x 6'-8 <sup>1</sup> / <sub>8</sub> "
	6'-0" x 8'-1/8"	6'-0" x 8'-1/8"	6'-1/2" x 8'-1/8"	6'-1/2" x 8'-1/8"
	8'-0" x 6'-8 <sup>1</sup> / <sub>8</sub> "	8'-0" x 6'-8 <sup>1</sup> / <sub>8</sub> "	8'-1/2" x 6'-8 <sup>1</sup> / <sub>8</sub> "	8'-1/2" x 6'-8 <sup>1</sup> / <sub>8</sub> "
	8'-0" x 8'-1/8"	8'-0" x 8'-1/8"	8'-1/2" x 8'-1/8"	8'-1/2" x 8'-1/8"
	10'-0" x 6'-8 <sup>1</sup> / <sub>8</sub> "	10'-0" x 6'-8 <sup>1</sup> / <sub>8</sub> "	10'-1/2" x 6'-8 <sup>1</sup> / <sub>8</sub> "	10'-1/2" x 6'-8 <sup>1</sup> / <sub>8</sub> "
	10'-0" x 8'-1/8"	10'-0" x 8'-1/8"	10'-1/2" x 8'-1/8"	10'-1/2" x 8'-1/8"
O X O R	8'-11" x 6'-8 <sup>1</sup> / <sub>8</sub> "	8'-11" x 6'-8 <sup>1</sup> / <sub>8</sub> "	8'-11 <sup>1</sup> / <sub>2</sub> " x 6'-8 <sup>1</sup> / <sub>8</sub> "	8'-11 <sup>1</sup> / <sub>2</sub> " x 6'-8 <sup>1</sup> / <sub>8</sub> "
	8'-11" x 8'-1/8"	8'-11" x 8'-1/8"	8'-11 <sup>1</sup> / <sub>2</sub> " x 8'-1/8"	8'-11 <sup>1</sup> / <sub>2</sub> " x 8'-1/8"
	11'-11" x 6'-8 <sup>1</sup> / <sub>8</sub> "	11'-11" x 6'-8 <sup>1</sup> / <sub>8</sub> "	11'-11 <sup>1</sup> / <sub>2</sub> " x 6'-8 <sup>1</sup> / <sub>8</sub> "	11'-11 <sup>1</sup> / <sub>2</sub> " x 6'-8 <sup>1</sup> / <sub>8</sub> "
	11'-11" x 8'-1/8"	11'-11" x 8'-1/8"	11'-11 <sup>1</sup> / <sub>2</sub> " x 8'-1/8"	11'-11 <sup>1</sup> / <sub>2</sub> " x 8'-1/8"
	14'-11" x 6'-8 <sup>1</sup> / <sub>8</sub> "	14'-11" x 6'-8 <sup>1</sup> / <sub>8</sub> "	14'-11 <sup>1</sup> / <sub>2</sub> " x 6'-8 <sup>1</sup> / <sub>8</sub> "	14'-11 <sup>1</sup> / <sub>2</sub> " x 6'-8 <sup>1</sup> / <sub>8</sub> "
	14'-11" x 8'-1/8"	14'-11" x 8'-1/8"	14'-11 <sup>1</sup> / <sub>2</sub> " x 8'-1/8"	14'-11 <sup>1</sup> / <sub>2</sub> " x 8'-1/8"
O X X O	11'-11" x 6'-8 <sup>1</sup> / <sub>8</sub> "	11'-11" x 6'-8 <sup>1</sup> / <sub>8</sub> "	12'-0" x 6'-8 <sup>1</sup> / <sub>8</sub> "	12'-0" x 6'-8 <sup>1</sup> / <sub>8</sub> "
	11'-11" x 8'-1/8"	11'-11" x 8'-1/8"	12'-0" x 8'-1/8"	12'-0" x 8'-1/8"
	15'-11" x 6'-8 <sup>1</sup> / <sub>8</sub> "	15'-11" x 6'-8 <sup>1</sup> / <sub>8</sub> "	16'-0" x 6'-8 <sup>1</sup> / <sub>8</sub> "	16'-0" x 6'-8 <sup>1</sup> / <sub>8</sub> "
	15'-11" x 8'-1/8"	15'-11" x 8'-1/8"	16'-0" x 8'-1/8"	16'-0" x 8'-1/8"
	19'-11" x 6'-8 <sup>1</sup> / <sub>8</sub> "	19'-11" x 6'-8 <sup>1</sup> / <sub>8</sub> "	20'-0" x 6'-8 <sup>1</sup> / <sub>8</sub> "	20'-0" x 6'-8 <sup>1</sup> / <sub>8</sub> "
	19'-11" x 8'-1/8"	19'-11" x 8'-1/8"	20'-0" x 8'-1/8"	20'-0" x 8'-1/8"

\* RECOMMENDED ROUGH OPENING: ADD 1/2" TO ACTUAL WIDTH AND HEIGHT

